

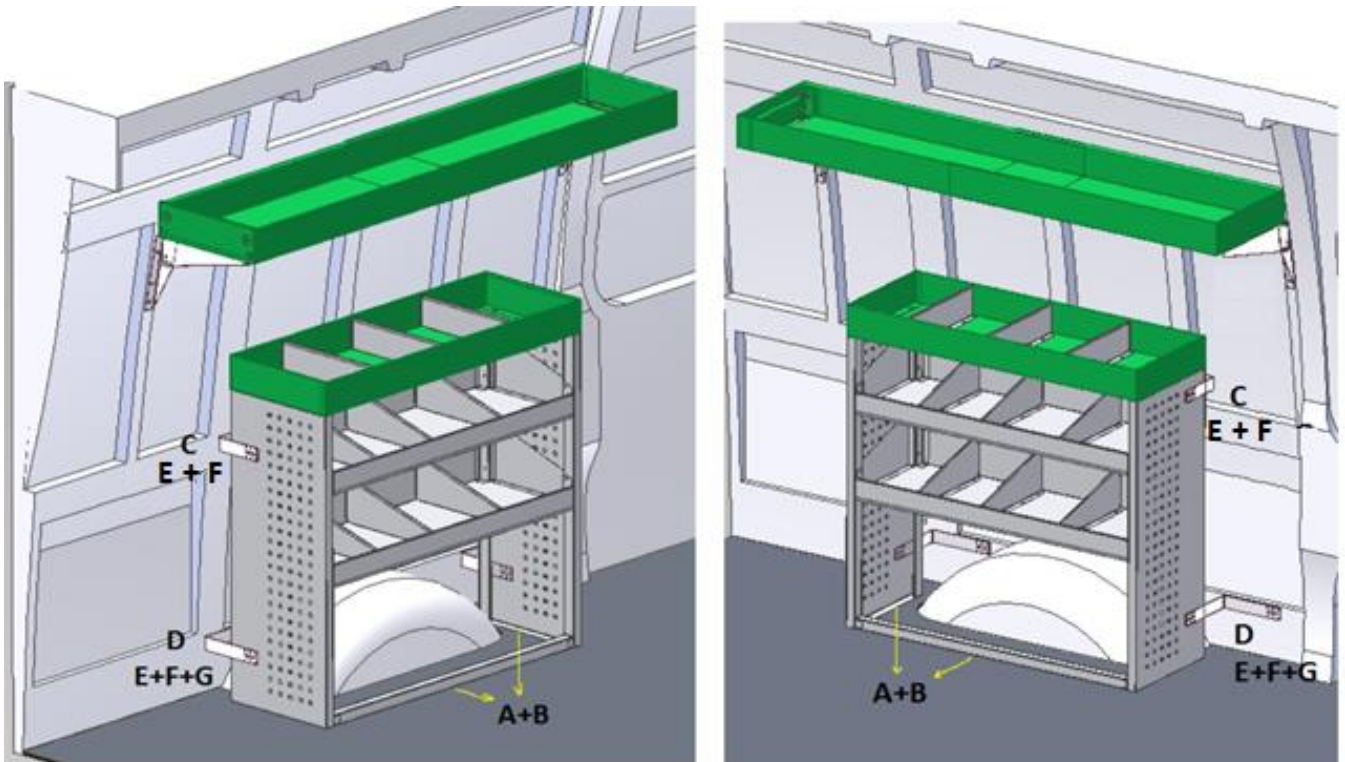


Mounting instructions Van Solutions

MS01 Mounting set 01 (Modules) :

6x	A*	= M8 INDRAAIMOF L=13mm
6x	A**	= M8 NIETMOER
6x	B*	= M8x12
6x	B**	= M8Xx20 + M8 VEERRING
2x	C	= MPL 0150
2x	D	= MPL 0200
32x	E	= BLINDKLINK NAGELS ROND 4,8mm x 16
4x	F***	= M8X20 + M8 ZELFBORGENDE MOER
4x	F****	= M8x20 + VEERRING + M8 NIETMOER

* = Vloerplaten gelijk of dikker dan 13mm, INDRAAIMOFFEN in vloerplaat **= Dunnere vloerplaten, NIETMOEREN in wagenbodem ***= Montage door kastwanden
****= Montage in wagen balken, blind





M8 INDRAAIMOF L=13mm



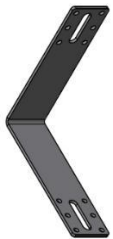
M8 NIETMOER



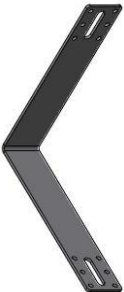
M8x12
M8x20



M8 VEERRING



MPL 0150



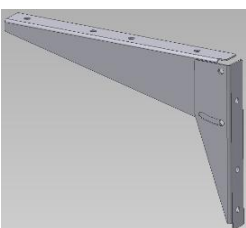
MPL 0200



BLINDKLINK NAGELS ROND 4,8mm x 16



M8 ZELFBORGENDE MOER



MB